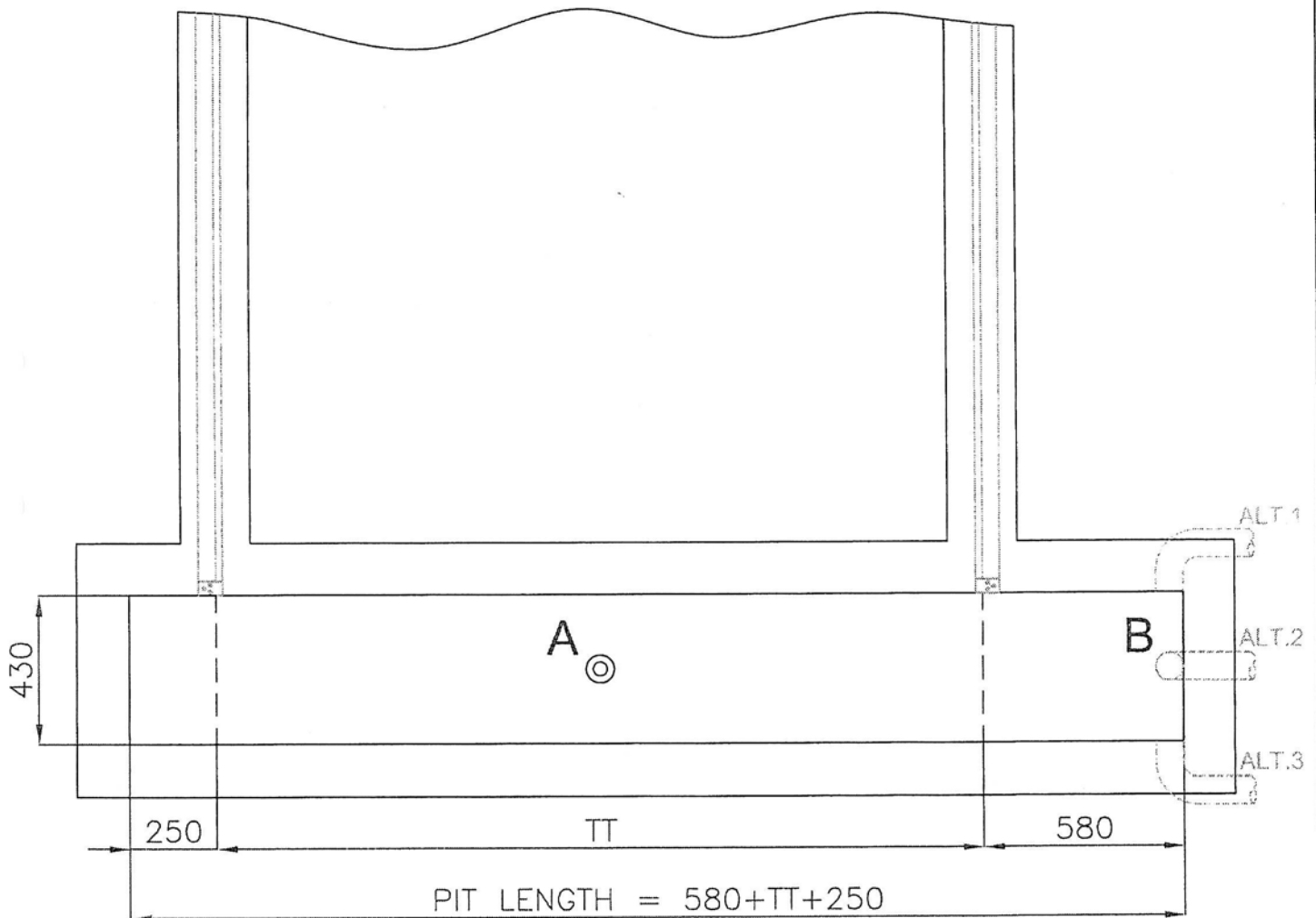
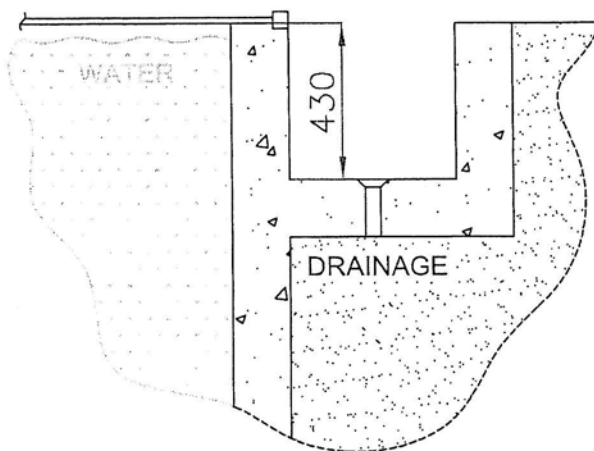


How to make a pit.

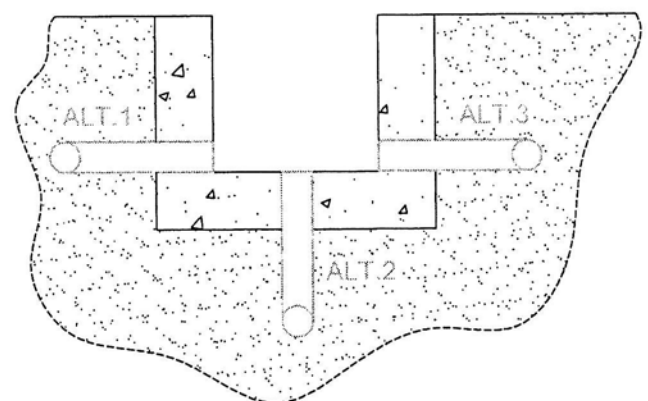
PIT FOR COVERS UP TO 14m LENGTH
WITH HYDRAULIC II UNDER RIGHT MECHANISM & TOP OR FLAT TRACK



TRANSVERSAL SECTION IN PLACE A
(SIDE VIEW)



TRANSVERSAL SECTION IN PLACE B
(SIDE VIEW)



- EVERY PIT HAS TO HAVE MINIMUM ONE OUT-FALL DRAINAGE.
- TUBE OF Ø 80-100mm IS RECOMMENDED FOR EVENTUAL EASY CLEANING.

- EVERY PIT HAS TO HAVE PIPELINE ROUTE FOR HYDRAULIC HOSES BETWEEN PIT AND POWER PACK ROOM.
- CHOOSE ONE OF ALTERNATIVES WHICH IS MOST SUITABLE FOR YOUR POOL.
- TUBE OF Ø 63mm OR BIGGER.
- NO SHARP BENDS.
- PUT PULLING ROPE TROUGH PIPELINE.